

Group Riding Tips

- ✦ Group riding requires an extreme level of awareness and concentration. Clear your mind of distractions and strong emotions (anger, frustration, etc.).
- ✦ Know your limits and ride within them; never ride above your abilities.
 - Mental
 - Physical
 - Motorcycle
 - Environment
 - Experience level
- ✦ Come to the ride prepared.
 - Arrive with a full tank of gas and an empty bladder
 - Bring appropriate riding gear for the expected range of conditions
- ✦ Maintain a constant speed. This helps prevent the “rubber band effect.”
- ✦ Always ride in a tight but courteous staggered formation or single-file line.
- ✦ Your eyes should be watching a few bikes up the road from you, not fixed on the bike directly in front of you. Always look at least 4 seconds ahead.
- ✦ Riding side by side is very dangerous and against the law in many states. The only time bikes are to be side by side is when the group is stopped at an intersection.
- ✦ Never come up on the motorcycle in front of or beside you.
- ✦ In a staggered or single-file formation, do not pass the bike in front of you.
- ✦ If an exit is missed, stick together as a group, proceed to the next exit, then return to the correct exit.
- ✦ When in a curve, the rider on the outside of the curve is required to give room to the rider on the inside of the curve, in case the inside rider has to use the full width of the lane to safely negotiate the curve.



Pre-Ride Meeting Checklist

- Identify ride leaders. Make sure they will be easy to identify on the ride.
- Discuss the ride destination. Include any information riders should have about the destination.
- Discuss the route. Mention any hazards or special conditions riders may encounter.
- Review staggered formation riding with the group. Not everyone may be familiar with it.
- Identify sweep riders.
- Be sure everyone understands that although it is a group ride, safety is a personal responsibility and riders must obey the laws of the road on an individual level, regardless of what the group does.
- If it isn't safe to pass, go through an intersection or make a turn – THEN DON'T.
- Keep the meeting short and to the point.
- Review the T-CLOCS safety check with all riders.
 - T — Tires and Wheels
 - C — Controls
 - L — Lights
 - O — Oil
 - C — Chassis
 - S — Sidestand
- Leave on time.

The SEE Technique

S – Scan **E** – Evaluate **E** – Execute

Train Your Peripheral Vision

Pick a point and look at it.

Notice how far you can see from side to side without moving your eyes/head.

Try to increase your awareness of what is happening at the edges of your vision.

Head Turns

Look through the turn to your final destination.



Staggered Formation Riding

Below is the primary riding formation.

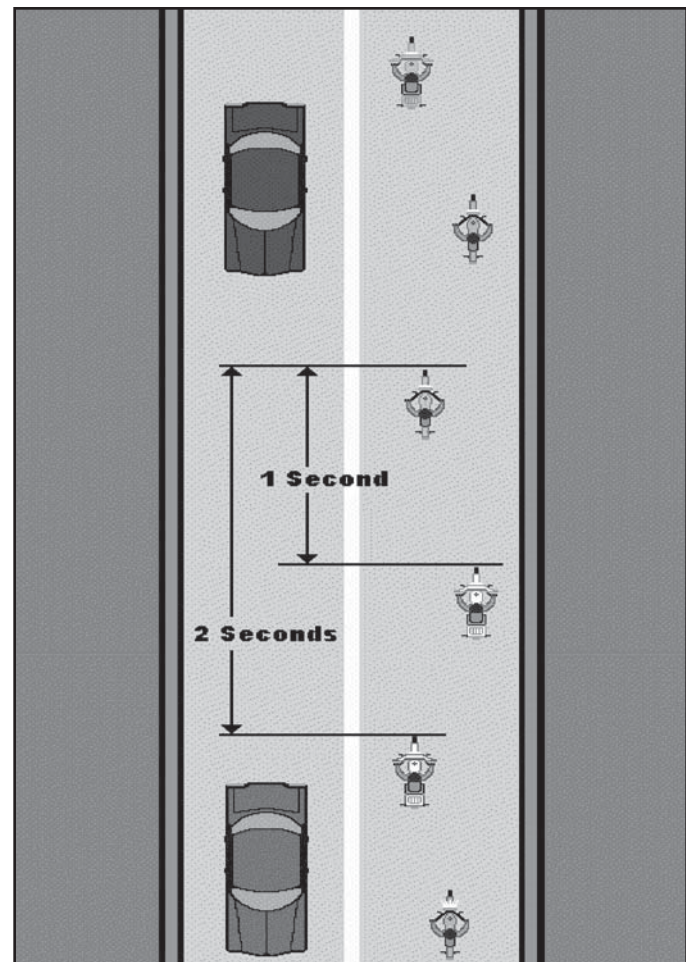
Single file is used when directed by the ride leader.

One-second rule: The bike in the lane to your left or right should not be less than one second ahead of you.

Two-second rule: Maintain at least two seconds between you and the rider directly in front of you.

Four-second rule: Look ahead four seconds at your immediate path of travel to give yourself more time to react to a hazard.

Twelve-second rule: Also look ahead at your anticipated path of travel. Twelve seconds is about one city block.

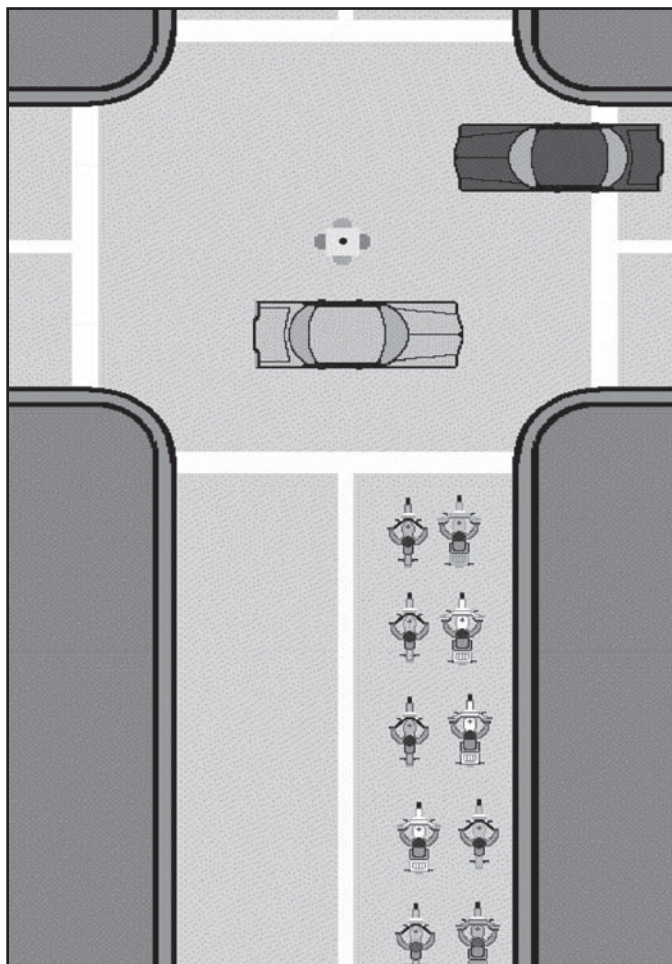


Stopping at an Intersection

Break staggered formation and pull up beside the bike in the adjacent lane.

When the ride leader has determined it is safe, he/she will proceed, followed by the "number 2" bike, the "number 3" bike, the "number 4" bike, etc.

If you don't make it through the intersection with the group, RELAX. Proceed when safe.



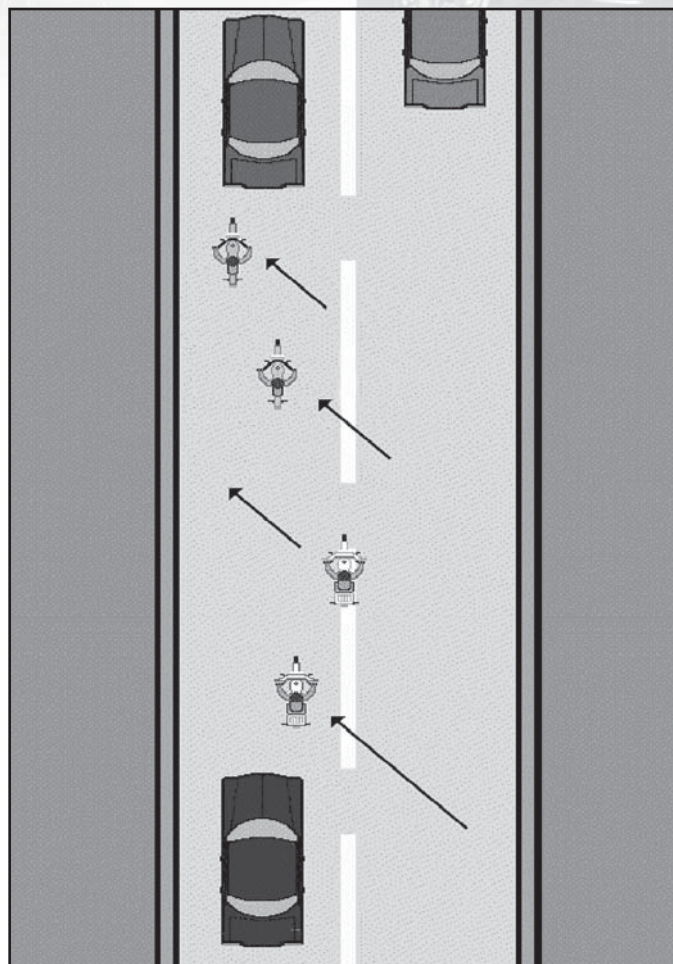
Changing Lanes or Passing on a 4-Lane Road

When your group wants to pass slower traffic or change lanes on a 4-lane road such as a freeway or interstate, ***the group may pass as a unit***. When it is safe and legal, the lead rider should signal the lane change when he/she has determined that the entire group can change lanes and pass as a unit. The other riders then follow this lead and signal one at a time to move into the next lane. Your lead rider should maintain a merging speed that will allow enough space for following riders to safely merge.

Since riding in a group doesn't change your right-of-way, be alert to the fact that ***cars entering or exiting the roadway may cut through your formation*** if your group is traveling in the far right lane. It may be better to move the group over one lane when everyone has safely entered the roadway.

In heavier traffic, resist the temptation to close up the formation too much. ***Maintain your space cushion***.

NOTE: Entering or exiting a 4-lane road such as a freeway or interstate always requires a single-file formation. This increases the space cushion and allows more reaction time. Change to staggered formation only after safely merging onto the roadway.



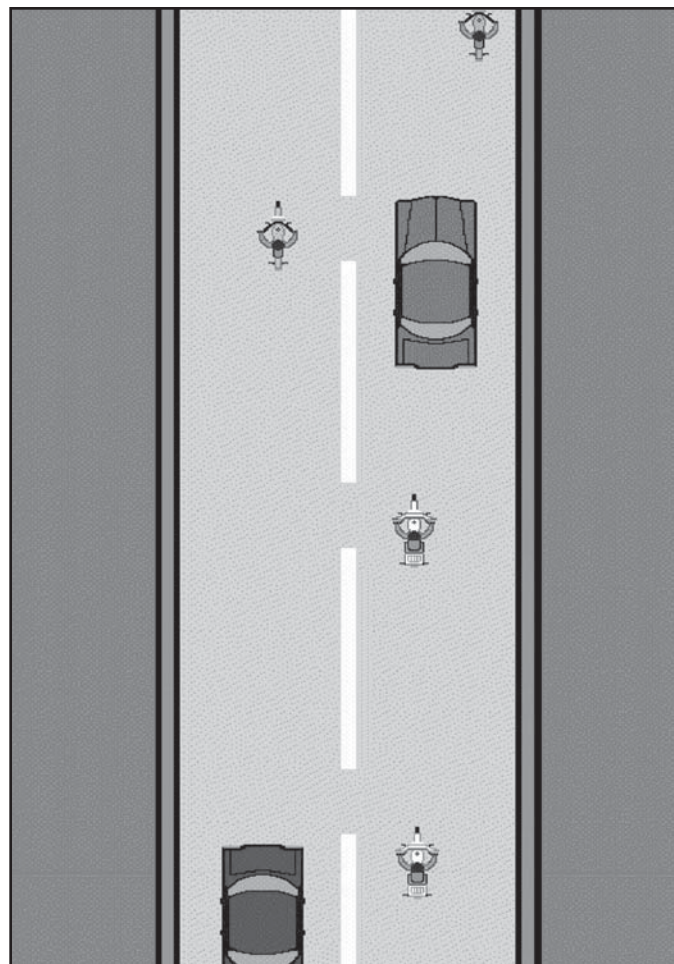
Passing on a 2-Lane Road

It is usually very difficult for a group to pass a slow-moving car.

If the lead rider decides to pass the car, each rider must decide on his/her own if it is safe to follow.

Pass as if you were riding alone.

IMPORTANT: After passing the vehicle, move on ahead to make room for all the bikes that will come behind you.



Group Parking

Orderly parking reduces the time needed to get off the road.

The ride leader leads the group off the road. The ride leader should ride all the way around the lot to allow all riders to get off the road. If fueling, ride leader will pull all the way around, then pull up to the fuel station.

Follow the ride leader to the selected parking area and establish your parking position.

Each bike should pull ahead of the intended parking place and then back up into the spot.

After you pull into your parking position and the group has settled down, you can move to the fueling area.

If you find yourself at the end of the group and can't get off the road while waiting for others to park, GO AROUND.

